

Impington Village College Model Aeroplane Club

Based near Cambridge we fly Free Flight, Radio Control and Control Line aircraft



Newsletter June 2024

Website ivcmac.bmfa.uk

edited by Alan Paul
alanpaul@outlook.com

10th Anniversary RM Cup

This will take place at Girton on Sunday 2nd June all day from 10am. Come along and take part or have a look

Whilst the 'Main Event' will be a 3 round competition for F2B pilots, there will also be a 'Clubman' contest for aspiring CL Stunt pilots to get a taste of what it is all about. Any amount of help and encouragement will be available in a friendly, fun competition.

Clubman level is suitable for anyone who is capable of flying a CL model, and the competitor chooses what manoeuvres they wish to perform from the old Class II schedule. The more stunts you can do, the greater your points score will be.

Outdoor action



Is this a real Bristol fighter seen on patrol?



No!! It's John Kilmartins Microaces model



Malcolm Bates Multiplex J10 – it looks better than it flies LOL, although it is now "tamed".

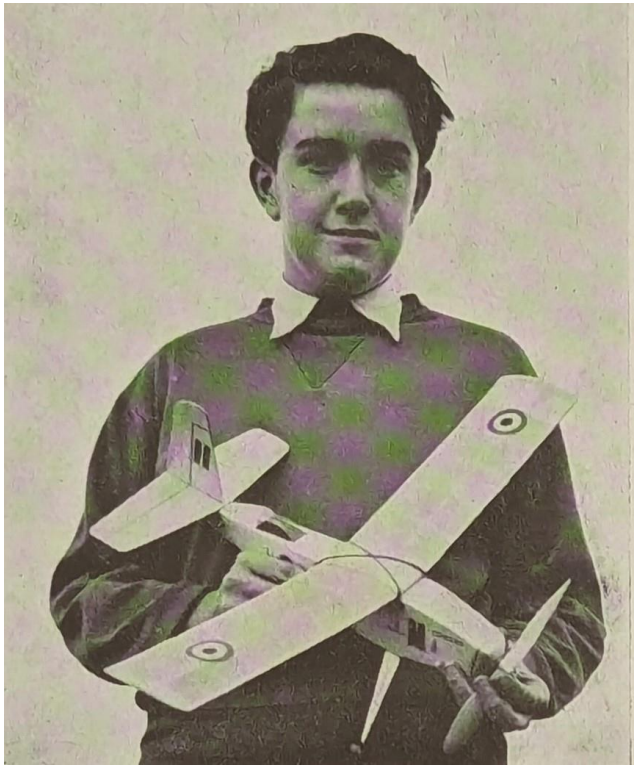


Alans 50mm EDF Lockheed T33 Shooting Star lands just in front of the alarmed cameraman



Another one of Johns models often seen flying indoors. This is the Hobbyzone Sport Cub. Thanks to Malcolm Bates for the photos.

Who is this chap?



Another picture from Ray Malmstrom's Eagle book of model aircraft. This is Chris Hinson from about 1959.

Worth repairing? Of course!!



Malcolm Bates pictured with his Rafale which after a hand launch entered an "Alpha Lock" where it was pointed upwards at full power, but with no airflow to alter course.

Naturally it toppled over, plummeted and embedded its nose in the ground!!

Half a tube of UHU Por and a few cocktail sticks and it's as good as new.



Malcolm has altered the canard angle of attack to try to prevent this happening again..... It flew again a week later and was just as good as it was before!! Video [here](#)

Sadly since this picture was taken it has repeated the plummet and is now a bag of spares – Ed. Luckily he has another!!

Superlative Peanut scale

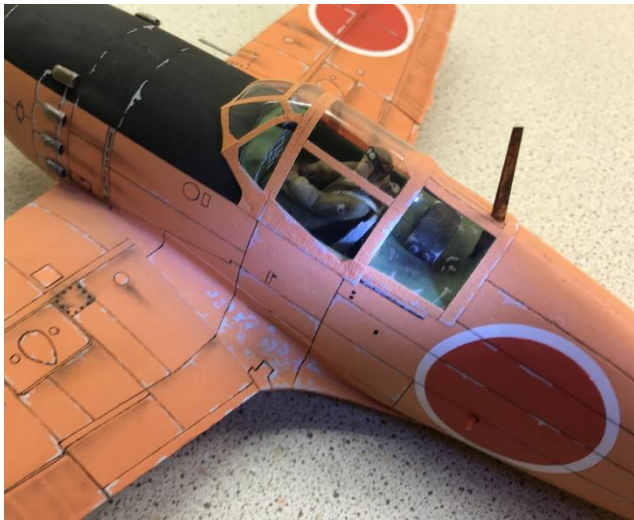
This is John Valiant's original planned entry for this year's indoor FF scale Nationals and he writes -



It is a Mitsubishi J2M2 Raiden (Jack) prototype. I was late in finishing it but managed a trimming session at the last full freeflight Saturday in April.

Unfortunately it still needs another trimming session to take part in the Peanut competition which will not be easy to do on the day. You only get three 40 minute slots to make 9 competition flights.

Peanuts are judged on the scale appearance of your model and then on 3 of your best duration flights added together.



Superb detail on the Raiden – another unusual subject from John – Ed.

The Raiden is made from Blue Foam and hand painted with acrylic paint. Insignia are cut from acrylic painted very thin tissue.



Unfortunately, the Raiden wasn't trimmed in time, and John decided to enter this Messerschmitt Bf 109 K-4 which first flew back in 2008.

Flying the trusty Me109, John came equal 3rd in the scale part of the Peanut competition and 5th overall which included the flying duration. His best two flight times out of nine allowed were 46 and 45 seconds.

Garry Flack came 6th in Kit Scale with his Veron Aeronca Champion and 6th in Pistachio with his Fike.

John and Garry also entered the Air Race but had to retire after 5 laps with a loose motor peg.

What's this then?



Answer at the end of the newsletter.....

Eddie's twin EDF Canberra



Better known in the club for his F2b control line efforts, Eddie Sharpe is pictured with his twin 50mm EDF Canberra.

D Day anniversary model



This is Mark Saunders Waco "Hadrian" glider in D day stripes. Note the small electric motor to save towing!!

Oops.....



Alans Funnystar was being consensually chased by Karas 5" racing quad and was neatly sliced in half. No serious damage and it was flying again the following week!! Video [here](#)

Phantom flyer



Roy looks pleased after the first flying session with his Keil Kraft Phantom powered by a PAW 1.5cc diesel. I bet the kit cost more this time than the 3/6d as advertised in the 1950s excerpt in the last newsletter.

Answer to What's this then?

It's a gearbox and wing attachment pegs from a FROG Interceptor MkIV. Thanks to Tony Harper for the picture.

Jobys Viper



Joby pictured after his first flight with the 50mm EDF Arrows Viper at Impington. This model used to belong to Alan and has had 2 mid air collisions with other club members, but still flies as good as new!! Amazing.

First Dusk flying this season



Alan with the amazing multicoloured Night Radian. It flies brilliantly but you have to keep on your toes with regards to orientation at dusk!! Disaster is a whisker away.....

Birthday Bash Sun 16th June

This is our all day "fly in" on the Impington field – book the date and check the website calendar for details. There will not be a BBQ this year as the chef is on his hols, but please bring sandwiches. The club will provide a plentiful free supply of cold drinks, savoury and sweet snacks and fruit.

How many planes can you name in Duxfords Airspace Hgr

