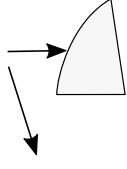


TILT W1 AND W2 AT WING ROOT OUTWARD WITH TEMPLATE



ROOT CROSS SECTION

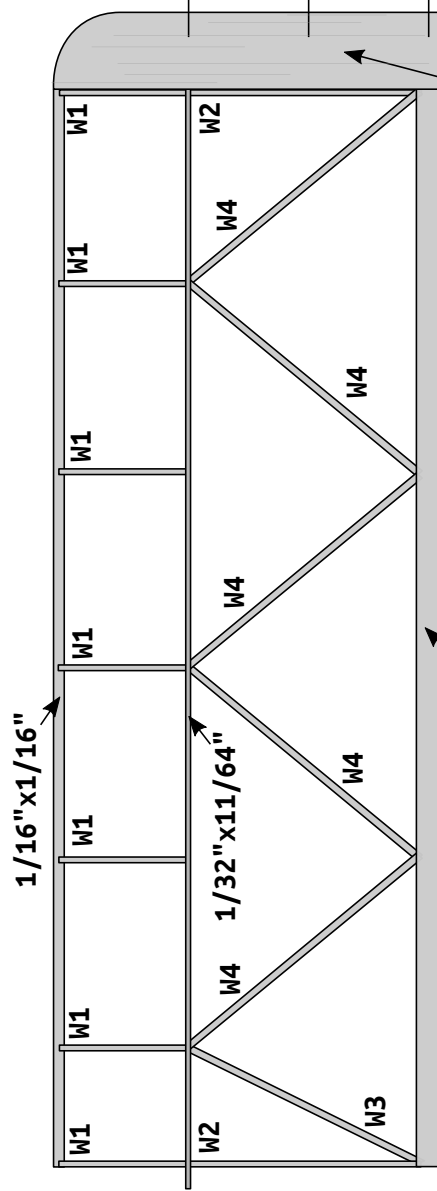


W1 1/32" - MAKE 14

W2 1/32" - MAKE 4

W3 1/32" - MAKE 2

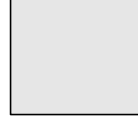
W4 1/32" - MAKE 10



CROSS SECTIONS

WINGTIP - CARVE FROM 2" x 13/32" x 11/64" BLOCK

SEAT CUSHION - MAKE 2 FROM LIGHT POLYSTYRENE FOAM OR LIGHT BALSAL

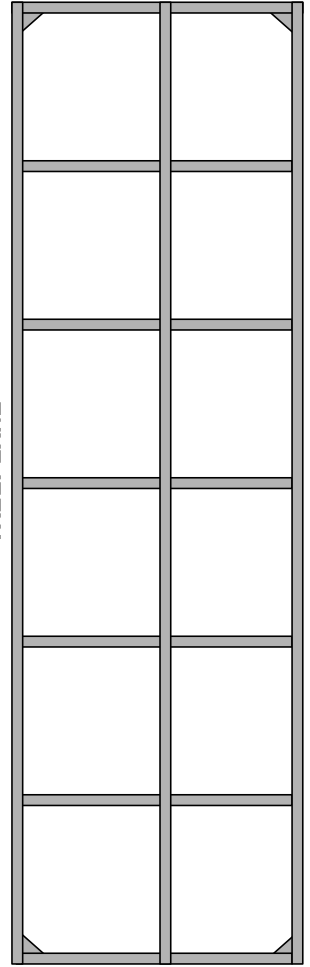


TOP



SIDE

TAILPLANE



INSTRUMENT PANEL

