

Impington Model Aeroplane Club
Founded in 1946 by Ray Malmström

edited by Alan Paul
alanpaul@outlook.com

www.impmac.co.uk

November 2019

International Tailless



Chris with his version of the International Tailless model. A sketch was found in Ray Malmstroms estate and sent to Al Backstrom in the USA who did a design which Terry King prepared a plan from.

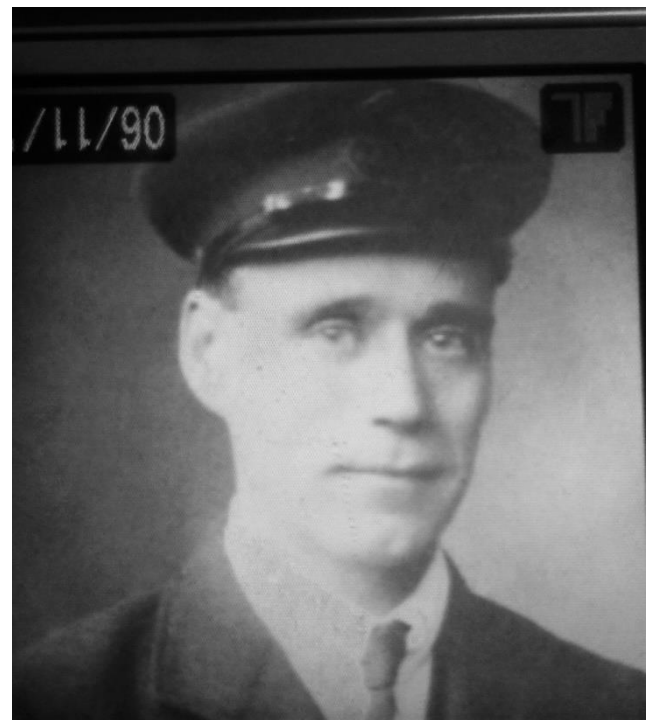
It has the Malmstrom look to it and seemed to be a tricky little so and so to get trimmed!!

Rarest Model plane?



This little model was made in about 1917 by Peter Judes grandfather William Walter Jude.

William was serving in the Royal Flying Corps at RFC Stonehenge and it was a present for his son (Peters dad). It was probably quite easy for him to make as he was a cabinet maker by profession and was responsible for repairing the wooden planes during WW1.



William Jude who made the model for Peters dad over 100 years ago

Dates for your Diary

Check the [website](#) for Saturday events

Sun 3rd Nov – Public Open Day [see here for details](#)

Thur 7th Nov – RC mini Quad competition – most passes through hoops in one minute

Thur 21st Nov – FF Butterfly competition.

Thur 28th Nov – AGM at 8pm in the conference room

Thur 19th Dec – Christmas Party!! See John Copsey for tickets

All is not lost!!



Stuart thought he had lost this model on a flyaway, but about 5 weeks later the groundsman handed it back to Bruce on a Friday evening and it was completely intact. It had spent some time on the roof of one of the school buildings

Lucky blighter!!

Handley Page Type 0/400



I was flying as a guest of the Stansted club when I spotted this 12 and a half feet span HP 0/400 built and flown by Laurie Poulter. It flew beautifully in a real scale like manner in the light winds on the day



Built about 8 years ago to 1/8th scale, Laurie claims it's not quite finished yet!! He built it from scratch and drew up his own plans from the HP original drawings.



It's powered by 2 electric motors, each supplied by power from its own battery.



Weighing in at 6.5Kg it's built light and the rigging wires are absolutely necessary to keep the structure rigid. It took Laurie about an hour to rig it for flight as it hadn't been out for a while. See a short video [here](#)

What's this then?



Answer at the end of the next page.....

House of Frog

This is a very nice Frog Raven that Stuart bought at Old Warden in September.



This was just one of about 100 models that were being sold from the collection of Mr Walden who had passed away. Stuart also bought a Tomtit – both from the Frog Senior series.

The very excellent “House of Frog” website has a collection of plans that can be freely downloaded.

Ladybird



Gordon built this 9” span version of the Ladybird some time ago and claims it’s never flown very well. However, I saw it do a nice circuit. These very small models are a real challenge!!

Not just for FF models!!



Bruce wields his pole to rescue Tobias model from up the tree of doom on one of the last Friday outdoor sessions.

Night flyers



Kara prepares her Night Radian for flight whilst Alans Flybeam waits in the distance.

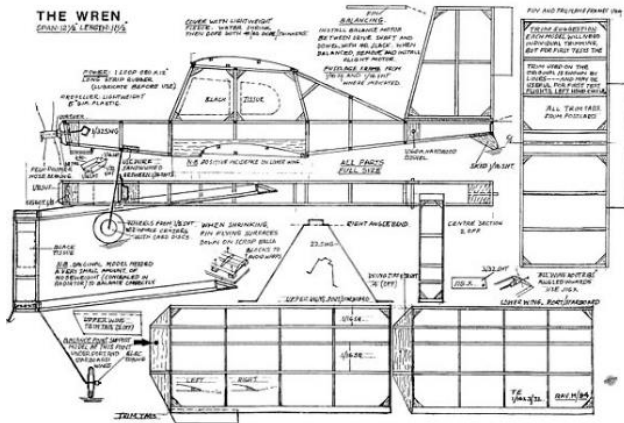
These models are quite easy to fly in the semi dark, but when the real night arrives it’s very easy to get disorientated!! That’s my excuse anyway.....

Answer to What’s this then?

It’s a Sunderland seen at IWM Duxford.

Wren Competition 19th Oct

This was the first free flight competition of the winter and was for Ray Malmstroms Wren.



Hugh Stevenson reports -

The Wren competition was well supported and everyone's models seemed to be flying well. However, as usual, Chris Strachans Wren flew the best!!



Chris Strachans winning Wren

Bruce and Clive fought it out for a close second and third place. The full results were -

1 st	Chris Strachan	141 sec
2 nd	Bruce Lindsay	133 sec
3 rd	Clive Anderson	131 sec
4 th	Hugh Stevenson	88 sec
5 th	Phil Haines	79 sec
6 th	Chris Hinson	73 sec
7 th	Michael Marshall	71 sec

Considering that all of the models were fairly well trimmed I was slightly surprised at the difference in flight times. Chris Strachan revealed that he had used a thick motor twice the distance between prop and motor hook. His prop wasn't particularly large but it is something I will be trying for myself.

Caption Competition



Hugh and Gerald relax and tell war stories, but can you think of a better caption?

Whoop the Hoop comp

This will be a fun competition on Thursday 7th November. It's for mini quads with enclosed rotors (commonly known as "Whoops").



You can't have failed to see the popularity of these little things and this comp will be to see who can get through the most hoops in 1 minute. There will be 4 hoops in the circuit and you have to try each one in sequence, but don't have to go through each one - if you miss one it won't count and you just go on to the next. FPV or line of sight flying allowed.

Safety Corner

If flying a heli or quad with exposed blades, these should be flown when there aren't many people in the hall - i.e. later in the evening and well away from everyone.

Spectators who aren't actually watching the heli are at some risk if it hits them and we have had "near misses" in the past. Mini whoops with enclosed blades can be flown at all times.

Drone Registration – the clubs advice (today that is!!)

You will all have seen the news from the BMFA that the registration fee for those flying RC planes / drones weighing more than 250g has been reduced to £9 annually. Also that the BMFA will be able to collect this and register us as part of the annual renewal in Dec / Jan.

Those who have existing BMFA RC qualifications such as the "A" or "B" test won't have to do the online test. The BMFA are also going to set up their own simpler online test shortly for members to do instead of the CAAs new test.

The best advice for now is to sit tight and do nothing whilst the dust settles. If you don't have an existing BMFA qualification, you will have to do some form of test before 30th Nov if you want to fly legally (either the CAA test or the new BMFA test), but you won't have to register as an Operator till we renew our BMFA subs in Dec / Jan.....

AAARghhhhhhh.....!!!!

Wren Competitors



An impressive line up of experienced modellers in the Sports Hall on 19th October with their Wrens